

D.I.Y. pinhole camera



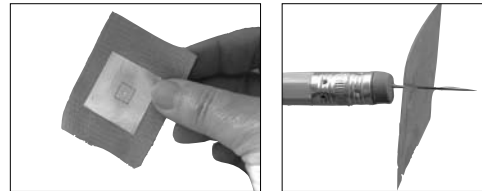
PINHOLE CAMERAS CAN BE BUILT FROM A VARIETY OF BOXES AND IN A VARIETY OF SIZES. THE ONE ILLUSTRATED HERE WILL GIVE YOU AN 8" x 10" PAPER NEGATIVE THAT IS CONTACT-PRINTED TO MAKE AN 8" x 10" POSITIVE.

YOU WILL NEED

- scissors
- X-acto knife
- ruler
- glue
- pencil
- duct tape
- #7 sewing needle
- aluminum pie plate
- cardboard box (wine boxes work well)
- extra cardboard pieces

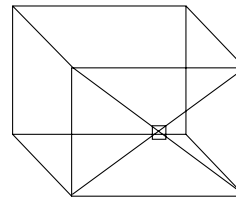
PINHOLE CONSTRUCTION

Cut a piece of pie plate about 1" square. Place a #7 needle at the eraser end of a pencil and use the needle to make a small indent in the centre of the aluminum sheet. Use sandpaper to sand smooth. Flip the piece over and make a larger indent. Sand and repeat process until aluminum piece rotates freely in the centre of the needle. Use duct tape with a small section cut out to attach to the inside of the box.



SHUTTER ASSEMBLY

1. After you have determined the front of the camera, draw two diagonal lines to determine the centre. Cut out an opening about 2.5 cm (1") square.



2. Start with a piece of cardboard that is 9.5" x 4.5". Cut out the parts for the shutter and assemble as shown. Glue S to box and T to S. Leave C loose in position. Fabricate a handle from extra cardboard in C.

